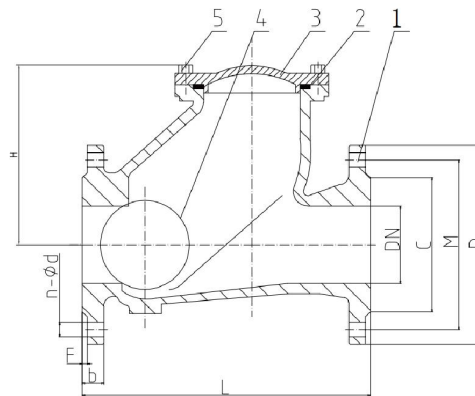


## ANSI Standard Ball Check Valve

### Product Description

Name	Description
<b>Model</b>	HQ41X-150Q
<b>Name</b>	ANSI Standard Ball Check Valve
<b>Size</b>	DN50-DN400
<b>Pressure</b>	150LB
<b>Temp.</b>	-20~100°C
<b>Suitable Medium</b>	Water, oil, etc.
<b>Body</b>	DI
<b>Seat</b>	NBR/EPDM
<b>Ball</b>	DI+EPDM/NBR



### Executive Standard

Name	Standard
<b>Design and Manufacture</b>	AWWA C508
<b>Face to face Length</b>	ASME B16.10
<b>Pressure Test</b>	API598
<b>Side Flange</b>	ASME B16.5

### Dimensions

DN	NPS(Inch)	L	H	D	C	M	b	f	n-d
50	2"	203	100	152	99	120.5	19	3	4-19
65	2-1/2"	216	132	178	118	139.5	19	3	4-19
80	3"	241	151	191	132	152.5	19	3	4-19
100	4"	292	198	229	156	190.5	19	3	8-19
150	6"	356	270	279	211	241.5	19	3	8-22
200	8"	495	368	343	266	298.5	20	3	8-22
250	10"	622	471	406	319	362	22	3	12-25
300	12"	698	531	483	370	432	24.5	4	12-25
350	14"	787	613	533	429	476	26.5	4	12-29
400	16"	914	690	597	480	539.5	28	4	16-29