

Concentric Flange Butterfly Valve

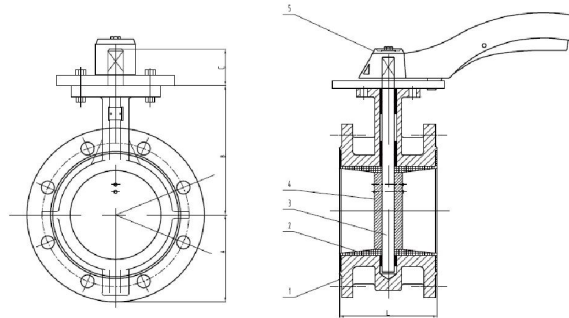
Product Description

Name	Description
Model	D41X-10/16Q
Name	Handle Flanged Butterfly Valve
Size	DN50-DN200
Pressure	PN10/16/150LB/10K
Temp.	-20~120°C
Suitable Medium	Fresh water, sewage, seawater, weak acid and alkali, air, steam, etc.
Body	DI/WCB/CF3/CF3M/CF8/CF8M
Seat Seal	NBR/EPDM/PTFE/SI
Disc	DI/CF3/CF3M/CF8/CF8M/C954
Stem	SS420/2Cr13/304/316
Actuator	Handle/Worm Gear/Electric/Pneumatic



Executive Standard

Name	Standard
Design and Manufacture	GB/T 12238
Face to face Length	GB/T 12221
End Flange	GB/T 17241.6-2008, EN1092-1, ASME B16.5, JIS 10K
Pressure Test	GB/T 13927-2008



Dimensions

DN	NPS(Inch)	A	B	C	L	150LB		PN10		PN16		10K	
						ØK	n-Ød	ØK	n-Ød	ØK	n-Ød	ØK	n-Ød
50	2"	69.5	126.5	32	108	120.7	4-φ19	125	4-φ18	125	4-φ18	120	4-19
65	2 1/2"	72	136	32	112	139.7	4-19	145	4-18	145	4-18	140	4-19
80	3"	88	146	32	114	152.4	4-19	160	8-18	160	8-18	150	8-19
100	4"	96.5	158	32	127	190.5	8-19	180	8-18	180	8-18	175	8-19
125	5"	115	179	32	140	215.9	8-22.4	210	8-18	210	8-18	210	8-23
150	6"	126	197	32	140	241.3	8-22.4	240	8-22	240	8-22	240	8-23
200	8"	161	230	45	152	298.4	8-22.4	295	8-22	295	12-22	290	12-23