

## SS Dual Plate Check Valve

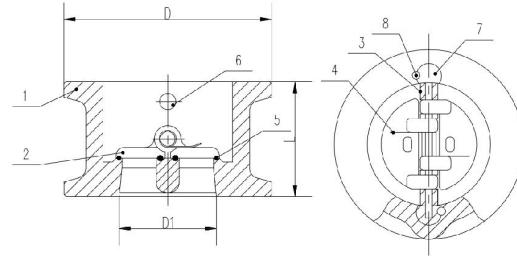
### ► Product Description

Name	Description
<b>Model</b>	DH76W-16P
<b>Name</b>	SS Dual Plate Check Valve
<b>Size</b>	DN50-DN600
<b>Pressure</b>	PN16
<b>Temp.</b>	-20~150°C
<b>Suitable Medium</b>	Water, oil, vapor, weak corrosive medium.
<b>Body</b>	WCB/CF3/CF3M/CF8/CF8M
<b>Seat</b>	13Cr/SS304/SS316
<b>Disc</b>	WCB/CF3/CF3M/CF8/CF8M/
<b>Stem</b>	2Cr13/SS304/316
<b>Spring</b>	SS304/SS316/X750



### ► Executive Standard

Name	Standard
<b>Design and Manufacture</b>	JB/T 8937-2010
<b>Face to face Length</b>	JB/T 8937-2010
<b>Pressure Test</b>	GB/T 13927-2008



### ► Dimensions

DN	NPS(Inch)	L	D	D1
50	2"	60	108	50
65	2 1/2"	67	127	65
80	3"	73	142	80
100	4"	73	162	100
125	5"	86	192	125
150	6"	98	218	150
200	8"	127	273	200
250	10"	146	328	250
300	12"	181	384	300
350	14"	184	444	350
400	16"	191	496	400
450	18"	203	556	450
500	20"	219	618	500
600	24"	222	732	600